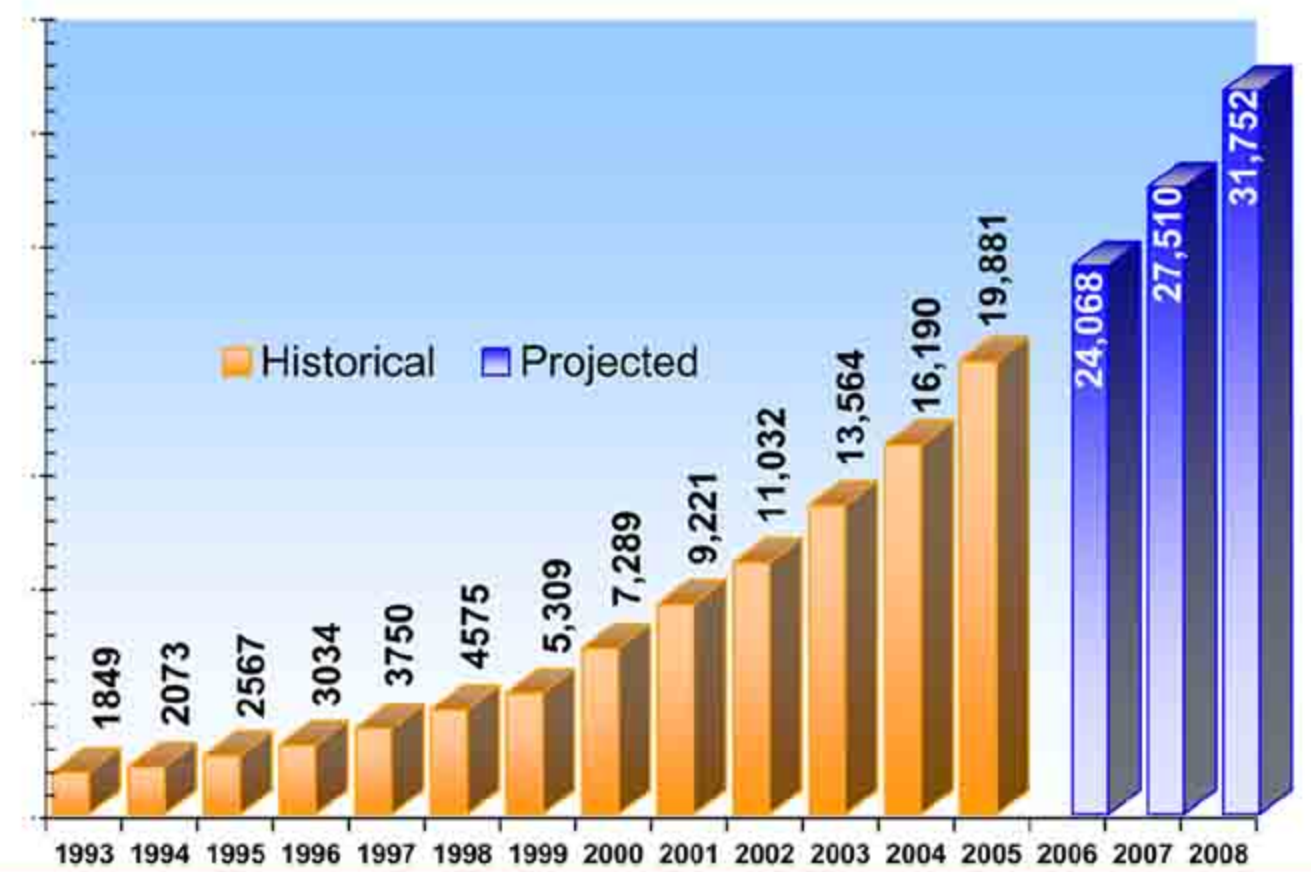
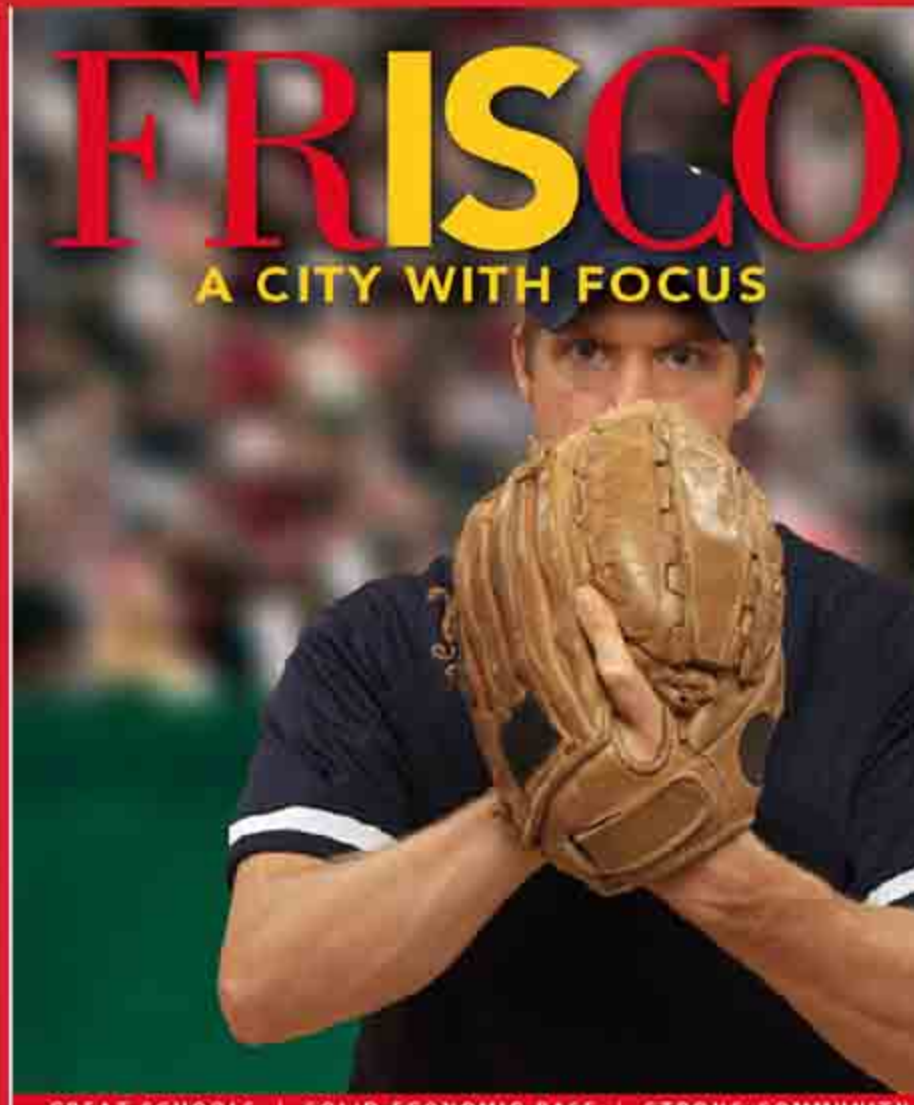
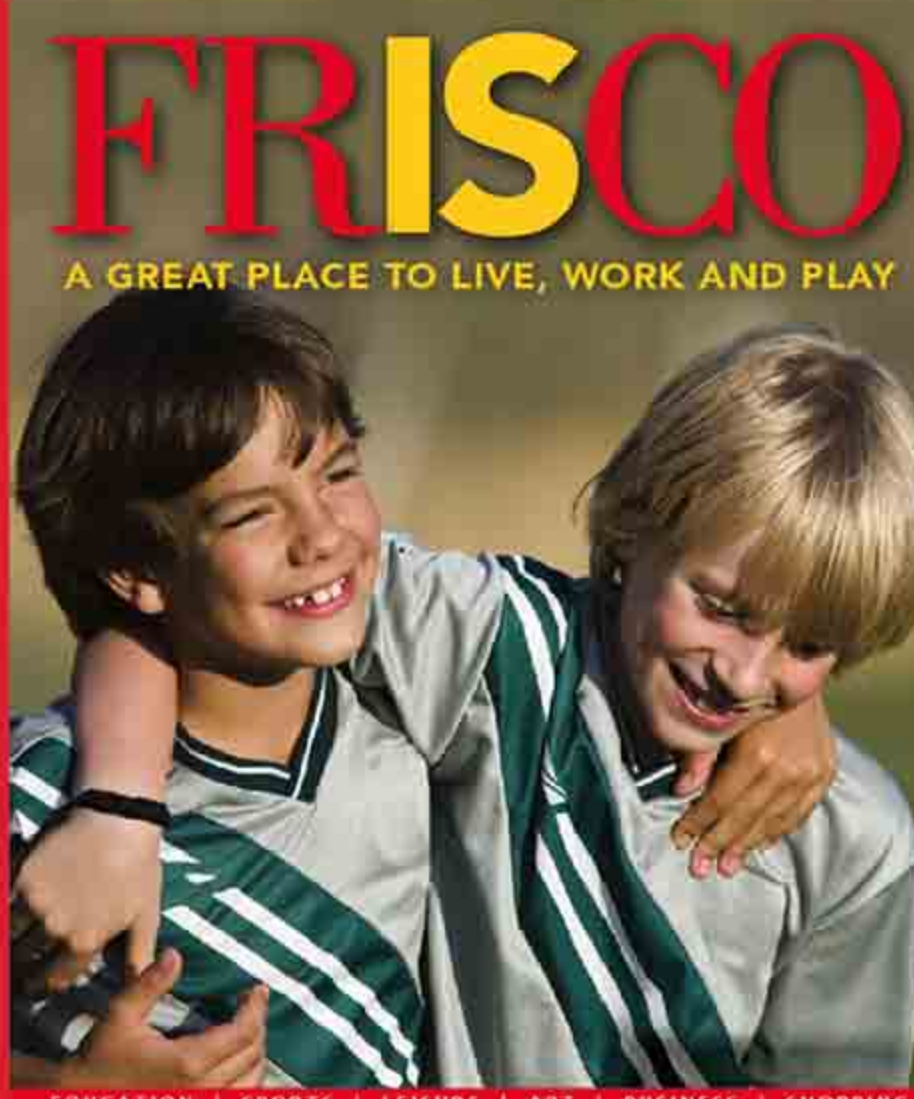
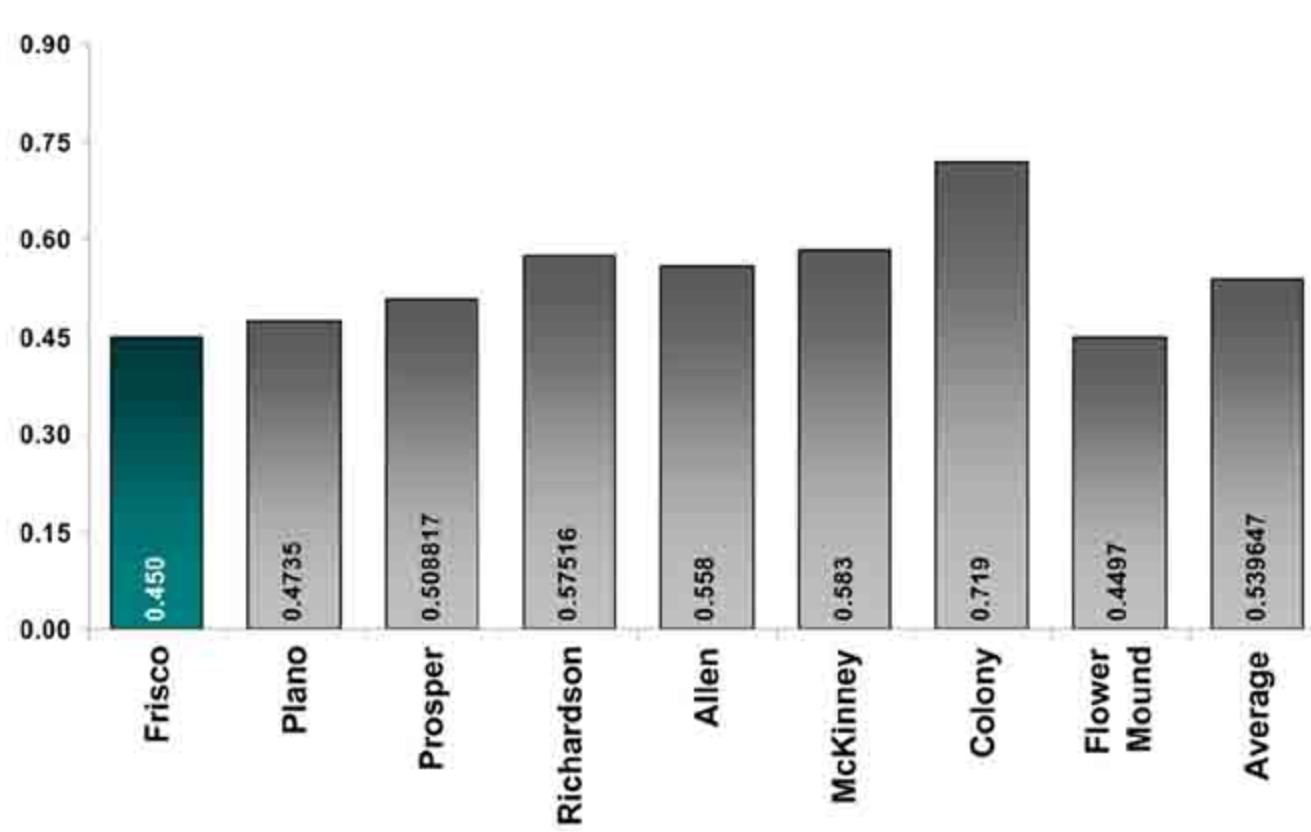


FISD Growth Projections



Area City Tax Rate Comparison



FRISCO FAST FACTS

FRISCO ECONOMIC DEVELOPMENT CORPORATION

- ◆ 2006 Community of the Year as recognized by TEDC
- ◆ 46.5 percent developed
- ◆ 72 square miles
- ◆ Centrally located between DFW Airport and downtown Dallas

TARGETED CLUSTERS

- ◆ Corporate Headquarters
- ◆ Technology
- ◆ Health, Medical & Life Science
- ◆ Financial Services
- ◆ Youth, Amateur & Professional Sports

DEMOGRAPHICS

- ◆ July 1, 2007 population estimate of 95,835; 108,727 population projection by 2010; and, 250,000 at build-out 2020
- ◆ Employment (unemployment as of June 2007)
 - City of Frisco is 3.6%
 - Collin County is 4.0%
 - Denton County is 4.2%
- ◆ Median household income of \$105,975
- ◆ Median Age of Frisco resident is 30.9 years
- ◆ 2006 average value of single family home \$268,974

ECONOMIC ADVANTAGES

- ◆ Location
- ◆ Market Access
- ◆ Transportation System
- ◆ Growing Population and Labor Force
- ◆ Low Costs
- ◆ Business Climate
- ◆ Public Art and art programs
- ◆ Quality of Life

FINANCIAL

- ◆ Combined property tax rate - City of Frisco \$2.362683
- ◆ City of Frisco and State sales tax rate of 8.25%
- ◆ Fiscal Year 2006 Assessed Value totals \$8.640 billion

EDUCATION

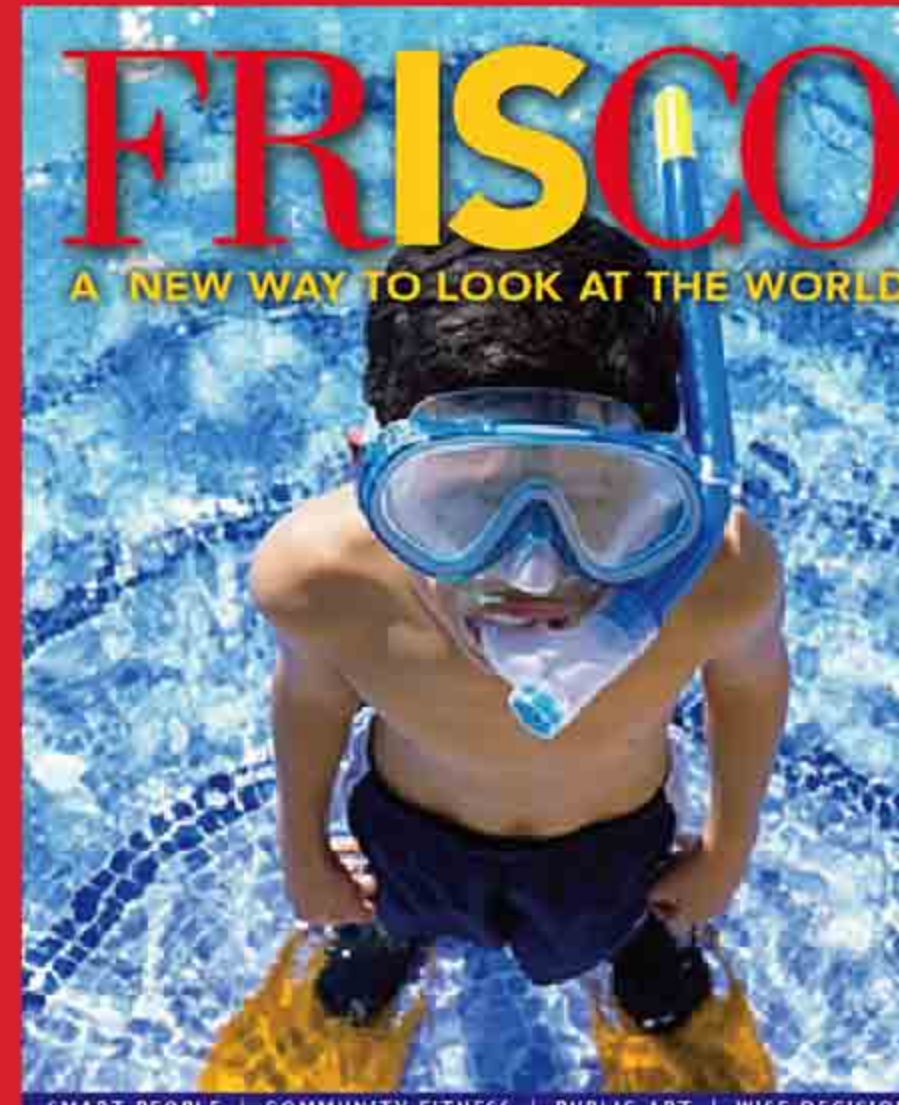
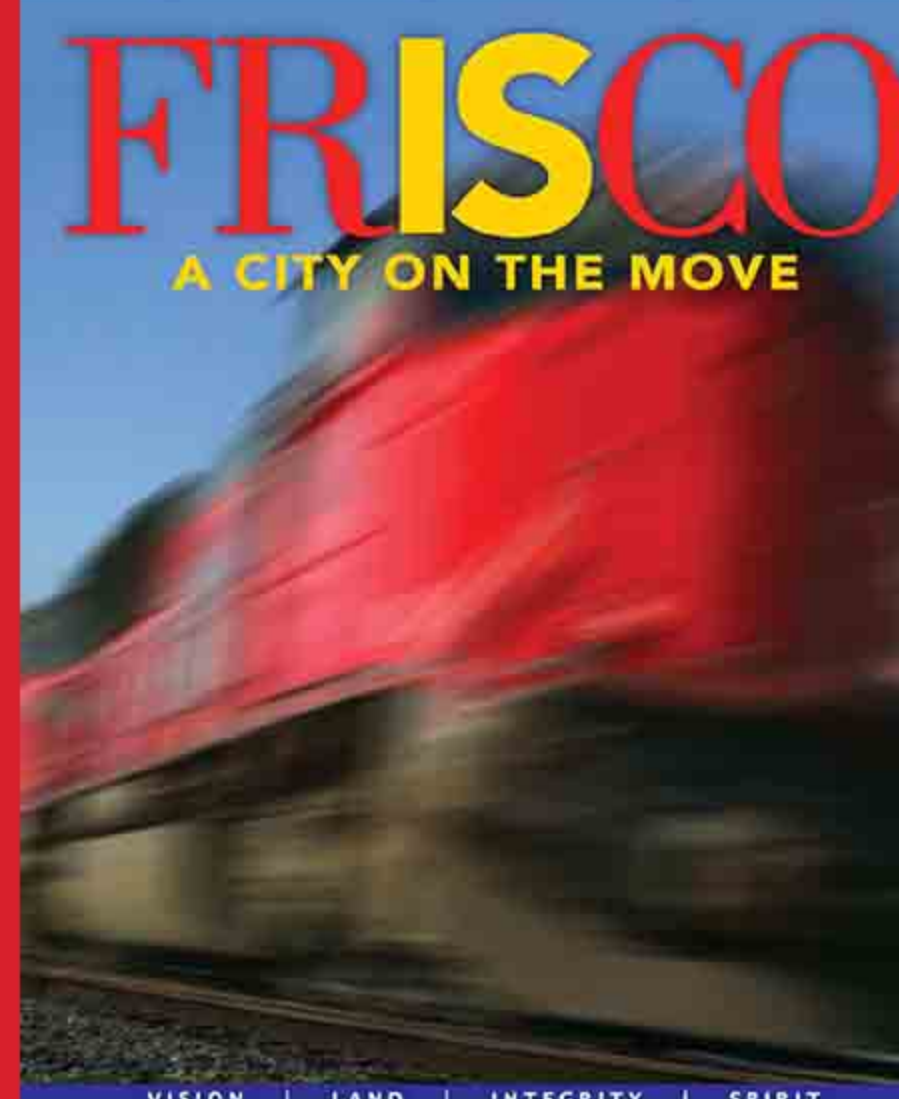
- ◆ Award winning public school systems
 - Frisco ISD - 4A
 - Prosper ISD - 3A
 - Lewisville ISD - 5A
- ◆ Private Schools
 - Legacy Christian Academy
- ◆ Higher Education
 - 18 four year public and private colleges and universities within a 60 mile radius
 - Collin County Community College

UTILITIES

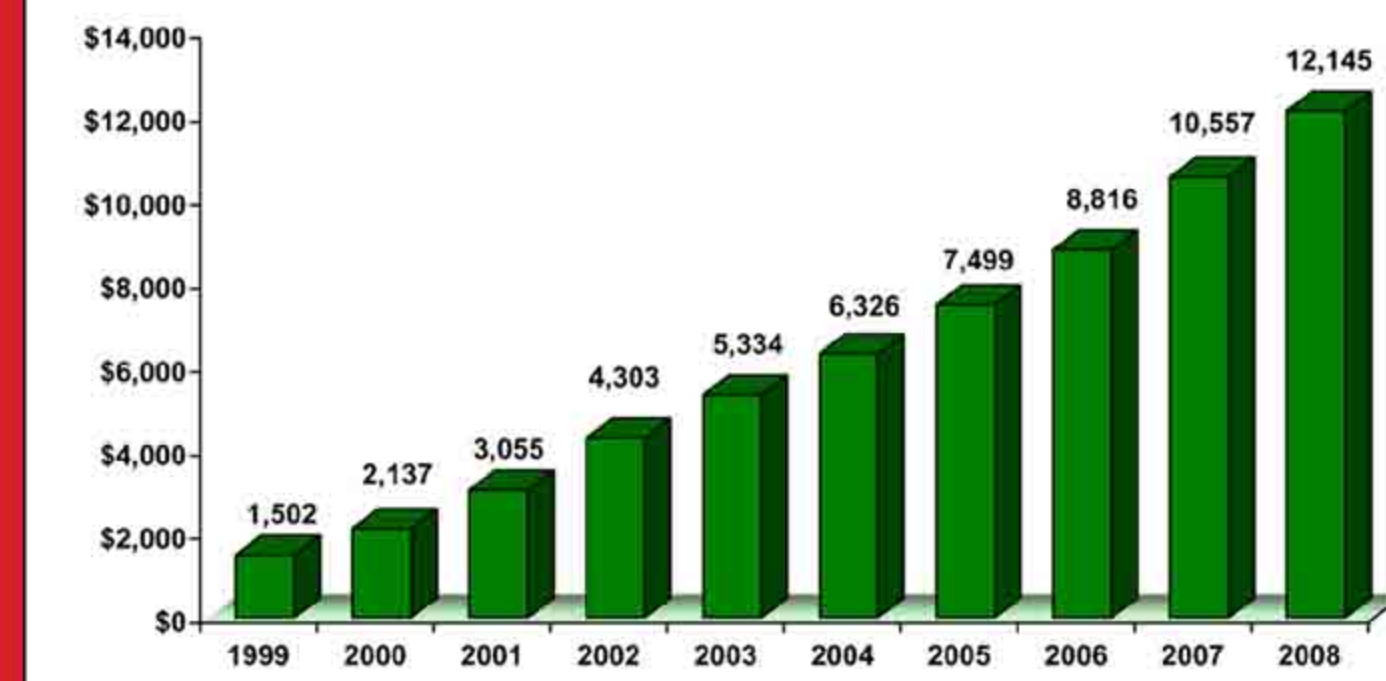
- ◆ Electrical Power Services
 - TXU energy
 - CoServ
- ◆ Natural Gas Services
 - Atmos
 - CoServ
- ◆ Telephone Services
 - AT&T
 - Grande Communications
- ◆ Water and Sewer
 - City of Frisco

TRANSPORTATION

- ◆ Located 25 miles from DFW Airport and Love Field DFW Airport -- www.dfwairport.com
 - 3rd busiest airport in the world
 - 900 daily non-stops to all domestic cities served
 - 63 daily non-stops to international locations
 - Access to US, Mexico and Canada within 4 hours
 - Home to American Airlines HUB
- ◆ Love Field -- www.dallas-lovefield.com
 - Home to Southwest Airlines
 - Total passengers 5,909,599
 - Aircraft operations 234,615
- ◆ Major highways are SH 289 (Preston Road), SH 121, Dallas North Tollway, US Hwy 380
- ◆ Tour Frisco via the Dallas North Tollway at: mms://198.99.250.100/Frisco



Frisco Property Tax Value History 1999 – 2008(Millions)



POPULATION GROWTH & PROJECTIONS 1990 - 2020

